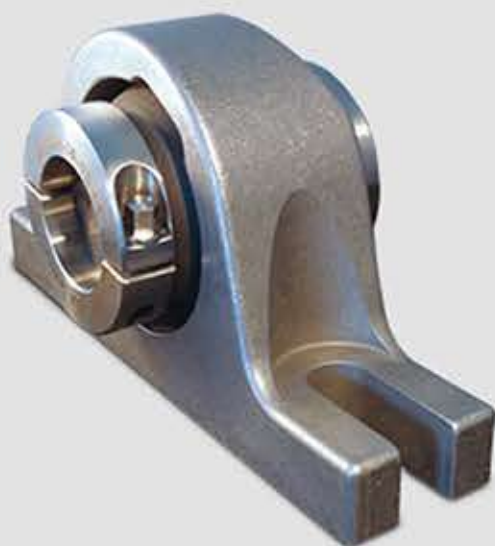


HAVE BEARINGS THAT NEED TO TAKE THE HEAT?

For bearings operating in high heat environments, the big challenges are **lubrication** and **expansion**. EDT Poly-Round® oven bearings are ideal in heat applications. Poly-Round® inserts are completely greaseless, and are available in "fixed" and "expansion" styles. High performance polymers and stainless steel sleeves yield non-corrosive, clean-operating, low maintenance bearings that run longer without service than alternatives.



Poly-Round® mounted bearings and Radial Poly-Round® unmounted bearings are proving their value on ovens made by manufacturers such as: **APV-Baker, Babbco, Casa Herrera, Gemini, Heat and Control, JBT-Stein JSO, Lawrence, MIWE** and others.

Advantages of Greaseless Poly-Round® bearings

- Eliminate PMs
- Avoid greasy housings
- Dependable operation with longer life, fewer change-outs
- Re-use functional components, replace only the worn parts
- Lower **Cost of Ownership**: less expensive in a year than alternative bearings

Poly-Round® plane bearings save you time and money over alternative bearings that require more frequent attention in severe operating conditions.



On wire belt and other sprocket-driven belt conveyors and on idler rollers, EDT Poly-Round® bearings are **GUARANTEED** for 1 year of **ZERO MAINTENANCE** life!

Let EDT sweat the details: for bearings operating in all kinds of high temperature environments from 200°F to 1,000°F, including:

Tunnel or batch ovens	Dampers	Batch fryers
Smoke houses	Kettles	Autoclaves
Proofers	Steamers	Branders
Furnaces	Retorts	Blanchers
Kilns	Bagel boilers	Dryers

complete a **Bearing Design Checklist** and EDT will assist you in selecting the best bearing for your application.



Bearings for Severe Service Environments

EDT Corp • Toll Free: (800) 810-7110 • Fax: (360) 574-3834
www.edtcorp.com
Contact your local representative