



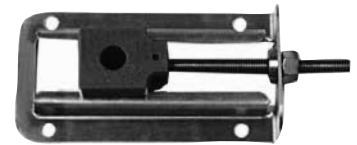
STAINLESS TAKE-UP FRAMES



Weld-on frame



Bolt-on frames

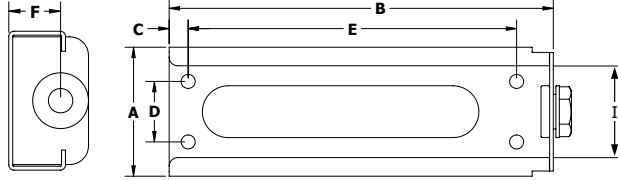
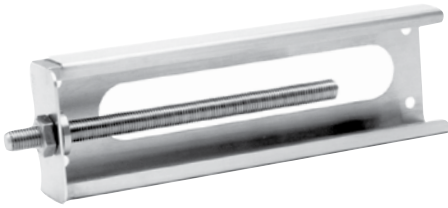


Mini bolt-on frame

Bolt-on and weld-on stainless steel take-up frames: Non-corrosion with maximum cleanability

- 300-series stainless steel frame and hardware for maximum corrosion resistance
 - Wide- and narrow-slot bolt-on style
 - Narrow-slot weld-on style for highest level of sanitation
- Accepts all take-up bearings by EDT and other manufacturers
- Stocking inventory for 3" to 24" travel, shaft sizes from 5/8" to 2-7/16" and metric
- USDA/NSF acceptance - The most sanitary and easy to clean frames available

Narrow Slot Take-Up Frame: Bolt-on

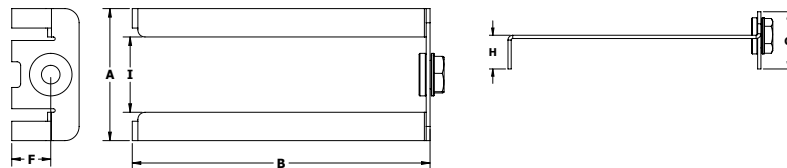


P/N		Wt lbs	Frame Size in inches			Bolt Pattern for 3/8" bolts			Shaft ϕ Height F	Thread Size	Track Width	Frame accepts these shaft sizes		
Size	Travel		I	A	B	C	D	E				Ring	Group	Shafts
TU5BC-	3	2.4	2-5/8	3-3/4	8	35/64	1-3/4	6-1/2	3/4-10	7/64	204	B	1/2, 9/16, 5/8, 11/16, 3/4, 20mm	
	6	3.2			11			9-1/2						
	9	4.0			14			12-1/2						
	12	4.8			17			15-1/2						
TU5DE-	3	3.2	3-1/2	4-41/64	9	35/64	2-3/4	7-1/2	3/4-10	7/64	206	D	1-1/16, 1-1/8, 1-3/16, 1-1/4, 30mm	
	6	4.0			12			10-1/2						
	9	4.8			15			13-1/2						
	12	5.3			18			16-1/2						
	18				24			22-1/2						
	TU5FGH-	3			4.0			4						5-1/4
6		5.0	13	11-1/2										
9		6.6	16	14-1/2										
12		7.8	19	17-1/2										
18			25	23-1/2										
24			31	*										

* Please ask for details

Find take-up bearings in our catalog:
 Poly-Round®.....See section B
 Ball bearing.....See section F
 All-Round®.....See section D

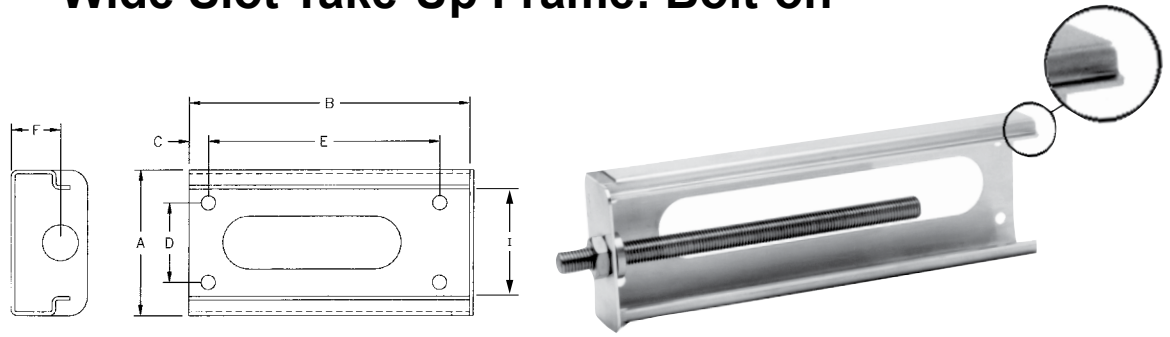
Narrow Slot Take-Up Frame: Weld-on



P/N		Wt lbs	Frame Size in inches					Shaft ϕ Height F	Thread Size	Track Width	Frame accepts these shaft sizes			
Size	Travel		I	A	B	G	H				Ring	Group	Shafts	
TD5BC-	3	1.7	2-5/8	4-1/2	8	2-3/8	1.45	1-3/8	3/4-10	9/64	204	B	1/2, 9/16, 5/8, 11/16, 3/4, 20mm	
	6	1.8			11									14
TD5DE-	3	1.8	3-1/2	5-17/32	9	2-3/8	1.45	1-3/8	3/4-10	9/64	206	D	1-1/16, 1-1/8, 1-3/16, 1-1/4, 30mm	
	6	2.0			12									15
	9	2.4			15									18
	12				18									
TD5FGH-	9		4	6-9/32	15	2-3/8	1.45	1-3/8	7/8-9	9/64	208	F	1-7/16, 1-1/2, 1-9/16, 1-5/8, 40mm	
	12				18									



Wide Slot Take-Up Frame: Bolt-on



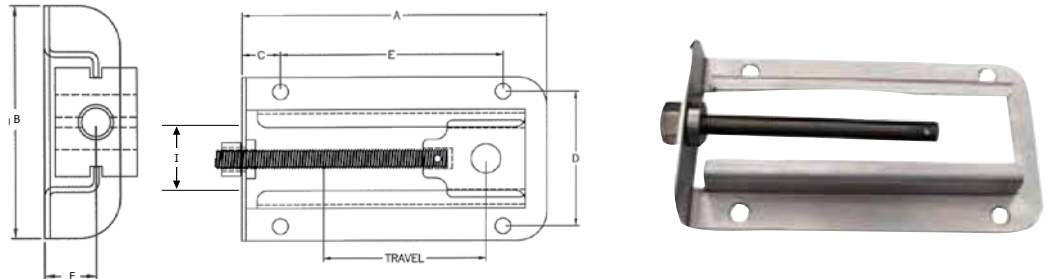
P/N		Wt lbs	Frame Size in inches			Bolt Pattern			Shaft ϕ Height F	Track Width	Thread size	Bolt size	Frame accepts these shaft sizes		
Size	Travel		I	A	B	C	D	E					Ring	Group	Shafts
TU7BC-	3	2.6	3	4-1/8	8	35/64	2-1/4	6-1/2	1-25/64	15/32	5/8-11	3/8	204 205	B C	1/2, 9/16, 5/8, 11/16, 3/4, 20mm 13/16, 7/8, 1, 25mm
	6	3.6			11			9-1/2							
	9	4.6			14			12-1/2							
	12	5.4			17			15-1/2							
TU7DE-	3	3.8	3-1/2	4-41/64	9	35/64	2-3/4	7-1/2	1-27/32	31/64	3/4-10	3/8	206 207	D E	1-1/16, 1-1/8, 1-3/16, 1-1/4, 30mm 1-3/16, 1-1/4, 1-5/16, 1-3/8, 1-7/16, 35mm
	6	4.3			12			10-1/2							
	9	5.4			15			13-1/2							
	12	6.3			18			16-1/2							
	18				24			22-1/2							
TU7FGH-	3	4.5	4	5-1/4	10	35/64	2-3/4	8-1/2	1-63/64	5/8	1-8	3/8	208 209 210	F G H	1-7/16, 1-1/2, 1-9/16, 1-5/8, 40mm 1-1/2, 1-5/8, 1-11/16, 1-3/4, 45mm 1-11/16, 1-3/4, 1-13/16, 1-7/8, 1-15/16, 2, 50mm
	6	6.2			13			11-1/2							
	9	7.6			16			14-1/2							
	12	9.8			19			17-1/2							
	18				25			23-1/2							
TU7IJ-	9	9	5-3/32	6-3/8	18.25	35/64	3-3/4	16-7/16	2-3/8	1	1-1/4	5/8	211 212	I J	2-7/16, 2-1/2, 2-5/8, 2-11/16, 2-3/4 2-13/16, 2-7/8, 2-15/16, 3
TU7KL-	18		6	8-1/2	29	1-1/2	6-1/8	*	2-9/32	1	1-1/2-6	5/8	214	K L	2-7/16, 2-1/2, 2-5/8, 2-11/16, 2-3/4 2-13/16, 2-7/8, 2-15/16, 3
													215		

* Please ask for details

Find take-up bearings in our catalog:
 Poly-Round®.....See section B
 Ball bearing.....See section F
 All-Round®.....See section D



Mini Narrow Slot Take-Up Frame: Bolt-on



P/N		Wt lbs	Frame Size in inches			Bolt Pattern for 3/8" bolts			Shaft ϕ Height F	Track Width	Frame accepts these shaft sizes
P/N	Travel		I	A	B	C	D	E			
EDTU	4	2.0	1-5/8	7-7/8	4-1/4	1	3-1/2	5-3/4	61/64	7/64	5/8, 3/4, 7/8, 15/16, 1, 25mm

Choose the best bearing for the conveyor


Use Poly-Round® Solution® on:

- Modular plastic belt
- Wire belt conveyors




See Section B (Amber),
pages B10 & B-11,
for Poly-Round® Solution® take-ups

GENERAL WIRE BELT CONVEYORS



**1 Year
GUARANTEED
Application**



NA5G_7_


Sprocketed drive


	Original Bearing	EDT Bearing
Bearing	Cast iron housing with carbon steel ball bearing	Polymer housing with Poly-Round® bearings
Failure	Caustic washdown causes cast iron housings and steel ball bearings to rust. Possible contamination causes compliance downtime.	EDT polymer housing is not affected by water, wash down or chemicals. The KG polymer material is HACCP friendly. No rust, chipping, or peeling
Length of Service	2 weeks- 2 months	12+ months (guaranteed application)
Maintenance Required	Regular greasing and associated activities	Requires no interim maintenance after installation
Features & Benefits	Low initial cost.	<ul style="list-style-type: none"> • Longer life reduces maintenance cycles • Lower <i>total</i> cost of ownership • Higher level of sanitation • Reliable operation with zero maintenance

Use the Stainless Ball Solution® on:


- Flat belts
- High-tension installations
- Overhung loads
- High speed shafts

STARFLEX SHRINK WRAP TRAY PACK MACHINE





ZY5GC8-1



TU5BC-x

Conveyor with tensioned belt

	Original Bearing	EDT Bearing
Bearing	Standard metal ball bearing unit in carbon steel frame	ZY5GC8-1 and TU5BC-3, stainless ball bearing in polymer housing with stainless take-up frame
Failure	Corrosion caused by washdown	Stainless ball bearing inserts require infrequent lubrication but insert, housing and frame are more resistant to caustic washdown chemicals than are standard steel components.
Length of Service	2 months	11 months
Maintenance Required	Requires regular greasing, frequent change-outs due to corrosion	Stainless ball bearings require infrequent lubrication.
Features & Benefits	Low cost of ownership	Longer life, reduced maintenance. Change insert only; housing and frame do not need to be replaced.



See Section F (Light Gray),
pages F-10 & F-11,
for Stainless Ball Solution® take-ups.