

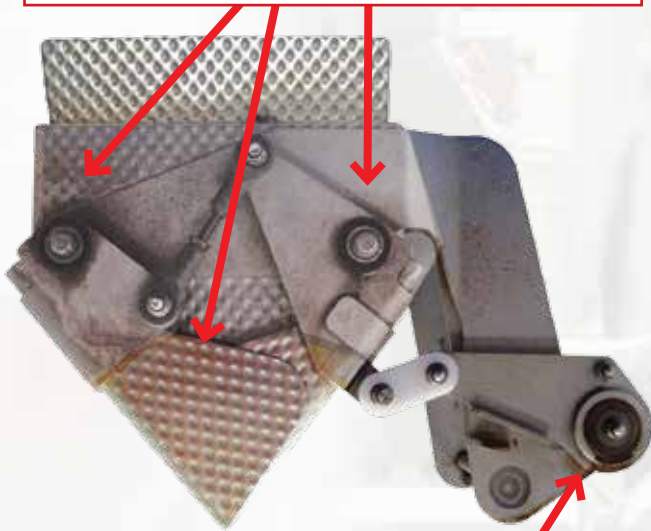
# RADIAL POLY-ROUND® BEARINGS ON YAMATO WEIGH SCALES

## RPR's save you money with less frequent bucket rebuilds

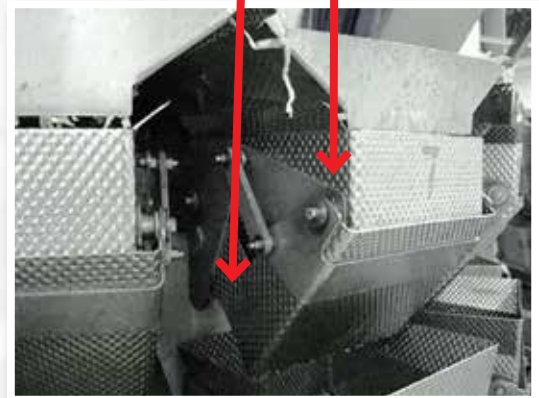
- Direct retrofit to industry-standard radial bearings
- Made of 316 stainless and polymer materials (choice of metal-detectable or high-performing polymer)
- RPR's can be customized to eliminate small component parts
- Plane bearings perform better in oscillating applications
- RPR's will never rust or fret to the shaft
- No rolling elements means no worry about balls falling into your product



DO YOUR BUCKETS LOOK LIKE THIS?



RPR's FROM EDT ARE RUST-FREE!



### ONE IS EASIER THAN TWO!

Replace two 6903 bearings and a spacer with one EDT OE6903x2.7RPR  
Half the number of bearings with more than double the bearing life. And **NO RUST!**  
(see the cost savings on reverse side)



**EDT GUARANTEES** a minimum of 1 year of zero maintenance on RPR's on weigh scale buckets.

If EDT's plane bearings do not last 12 months, we will give you a stainless steel ball bearing in its place.



BY TIMKEN

# Radial Poly-Round® Bearings

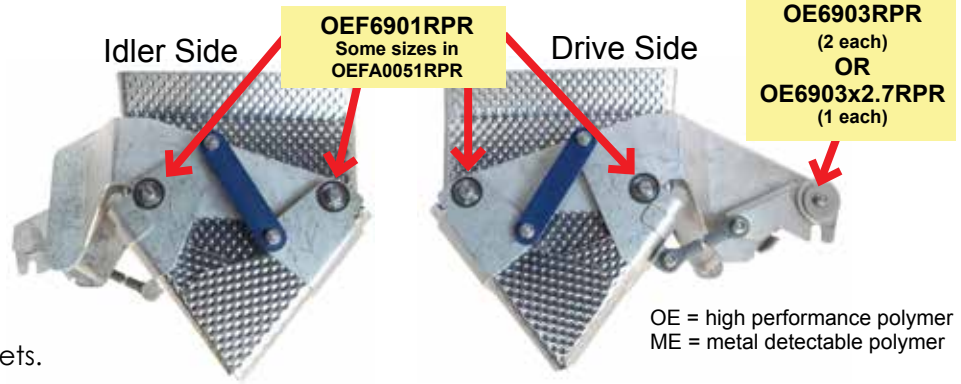
## Radial Poly-Round® Bearings

- Directly retrofit radial bearings such as 628/6, 624/6, 619/6, 6901, 6903 and others
- NO RUST, NO GREASE



### EDT GUARANTEES

a minimum of 1 year of zero maintenance on RPR's on weigh scale buckets.



OE = high performance polymer  
ME = metal detectable polymer

EDT	RPR	p/n	ID	OD	flb	Flg OD	OE p/n	OE component
OE	F696/4	RPR	4	15	5	17	F696/4	
OE	F624/6	RPR	5	13	6	15	F624/6	
OE	F628/6	RPR	6	13	5	15	F628/6ZZ	GB02307A0676
OE	F619/6	RPR	6	15	5	17	F696ZZ	GB02307A0677
OE	FA0051	RPR	6	21	9	24	Bushing with spacer	SA44117A0051
OE	F688	RPR	8	16	5	18	F688ZZ	
OE	61801	RPR	12	21	5		61801-2RS	
OE	F6901	RPR	12	24	6	27	61901-2RS	SA44117A0051
OE	61802	RPR	15	24	5		61802-2RS	405643317A0004
OE	F69A3	RPR	15	30	7	32	Bushed F6903-2RS	SA44117A0013
OE	F6903	RPR	17	30	7	32	F61903-2RS	SA44117A0013
OE	6903	RPR	17	30	7		6903-2RS	SA44117A0013
OE	6903x2.7	RPR	17	30	19		2 ea 6903-2RS	SA44117A0013
OE	61804	RPR	20	32	7		6804-2RS	

ID Size	4 mm	5 mm	6 mm	12 mm	15 mm	17 mm
Color Key						



## Maximize your maintenance budget with Radial Poly-Round® bearings

Radial Poly-Round® COST OF OWNERSHIP EXAMPLE			
Original stainless radial ball bearing changed every six months		EDT Radial Poly-Round® lasting 18 months PLUS eliminate spacer for easier replacement	
Original bearing S6903-2RS 2 per drive arm	\$27.00 x 2 \$54.00	EDT Radial Poly-Round® OE6903x2.7RPR 1 per drive arm	\$88.00 x 1 \$88.00
Cost to initially install bearing sets Labor \$35/hr x 10 mins Cost of bearing & installation	\$5.83 \$59.83	Cost to initially install bearing sets Labor \$35/hr x 10 mins Cost of bearing & installation	\$5.83 \$93.83
Scale has 14 weigh buckets & 14 feed buckets 28 buckets with 2 bearing sets per scale Cost to buy/install bearings every 6 mos.	x 56 \$3,350.48	Scale has 14 weigh buckets & 14 feed buckets 28 buckets with 1 bearing set per scale Cost to buy/install bearings on 1 scale	x 28 \$2,627.24
Original bearing lasts 6 months Number of change-outs in 18 months Cost of drive arm bearings on 1 scale	x 3 \$10,051.44	EDT bearing lasts 18 months Number of change-outs in 18 months Cost of drive arm bearings on 1 scale	x 1 \$2,627.24
<b>Overall cost to buy/install/maintain original ball bearings</b>	<b>\$10,051.44</b>	<b>Overall cost to buy/install/maintain EDT Radial Poly-Round® bearings</b>	<b>\$2,627.24</b>
18 month cost of bearings Original ball bearings versus EDT Radial Poly-Round® bearings		<b>Cost savings per Yamato scale = \$7,424.20</b>	

**LESS MAINTENANCE + LONGER LIFE = SAVINGS**

**Let EDT Help!**  
To check which bearing is best for your application, complete a **Bearing Design Checklist (BDC)** today and you'll hear from us promptly!  
[www.edtcorp.com/docs/bearing-design-checklist.pdf](http://www.edtcorp.com/docs/bearing-design-checklist.pdf)



BY TIMKEN