

EDT BLUE HOUSINGS

Elevate food safety with
the first polymer bearing
 housings that are
optically detectable

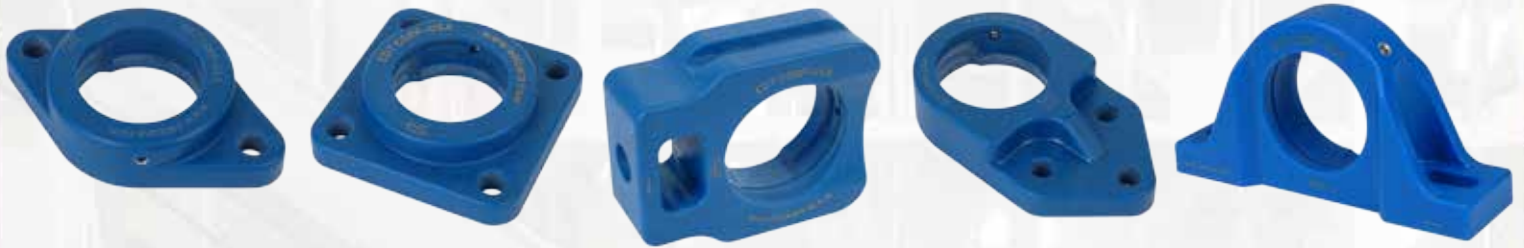


- EDT bearing housings are USDA-accepted
- Blue is same wavelength as other optically detectable products
- Smooth, cleanable parts are ideal for HACCP and HARPC programs
- Dimensionally interchange industry standard mounted bearings in all sizes and styles from 1/2" to 3" and metric
- Available with EDT's Poly-Round® plane bearing or stainless ball bearing



BY TIMKEN

EDT BLUE polymer housings: Strong, clean, traceable



Blue polymer housings are available in the same sizes and styles as original gray 'KG' polymer



Housings are USDA-accepted

Choice of bearing inserts:

- Ball bearings (Value, Choice, Classic)
- Poly-Round® (Select material based on the application)

HACCP-friendly units are designed for highest levels of sanitation with smooth surfaces and few crevices

Available in shaft sizes from 1/2" to 3";
12mm to 80mm

No metal crush bushings



Also available in QuiKlean® with an integral stand-off, 5/8" above the base

For assistance selecting the best bearing for your application, complete a **Bearing Design Checklist (BDC)**

<http://tinyurl.com/edtbdc>



MADE IN AMERICA



BY TIMKEN