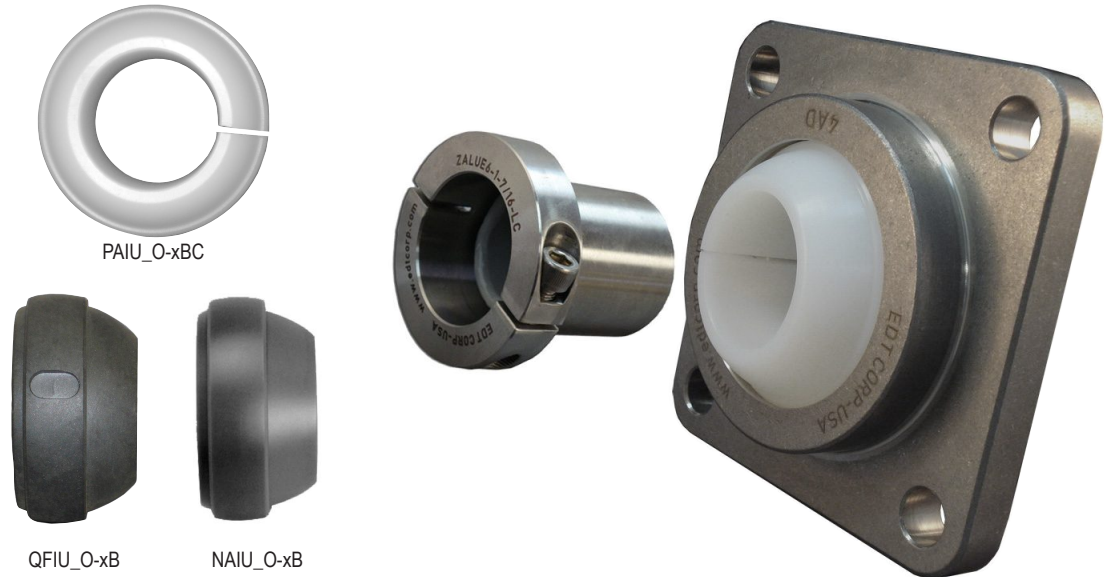


### FREEZER BEARINGS



## Self aligning polymer plane bearings eliminate problems of grease operating in low temperatures

Poly-Round® bearings have NO moving parts, therefore they require NO GREASE  
EDT Poly-Round® bearings are ideal for low temperature operations like

- Spiral freezers
- Freezer input conveyors
- Ice makers, ice rakes
- Any equipment that has movement at temperatures below freezing (32°F/0°C) where standard lubricants do not operate well because of the low temperature

3 Bearing options: Which to choose?^

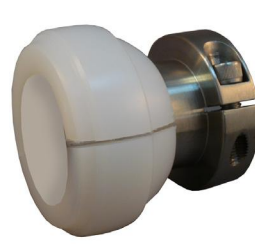
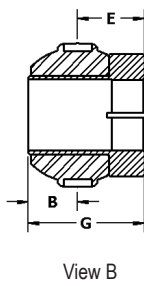
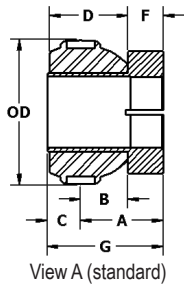
- For 32°F to -40°F use 'NA' freezer bearing NAIU\_7-xB-LC
- For -40°F to cryogenic use either
  - a. Cut style 'PA' Poly-Round® PAIU\_7-xBC-LC  
Most reliable performance when application is within PV paramaters\*
  - b. 'QF' freezer bearing QFIU\_7-xB-LC  
When PV design limit of the equipment is beyond 'PA'

^ Low temperature housing selection: KG polymer acceptable to -40°F (Section D); lower temperature requires stainless (Section E).

\* Low temperature installation may permit PV limits up to 2x higher than charted limits (page H-3).

# Poly-Round® Freezer Bearing with DoubleLock® Sleeve

The assembly of freezer bearing and sleeve won't rust, and stays firmly located.



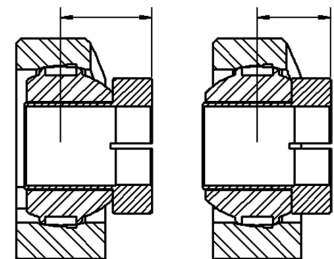
Sample p/n PAIUC7-1BC-LC



Sample p/n QFIUC7-1B-LC

Assembly Part #	X = Shaft Diameter			A	E	B	C	D	F	G	Wt
	mm	in	16 <sup>ths</sup>								
NAIUA7-xB-LC PAIUA7-xBC-LC QFIUA7-xB-LC	12 15 17	1/2 9/16 5/8 11/16	8 9 10 11	1.04 26.4	0.75 19.1	0.60 15.2	0.34 8.7	0.91 23.2	0.44 11.2	1.38 35.1	.2
NAIUB7-xB-LC PAIUB7-xBC-LC QFIUB7-xC-LC	12 15 17 20	1/2 9/16 5/8 11/16 3/4 13/16	8 9 10 11 12 13	1.10 27.9	0.94 23.8	0.60 15.2	0.44 11.2	1.04 26.3	0.50 12.7	1.57 39.8	.3
NAIUC7-xB-LC PAIUC7-xBC-LC QFIUC7-xB-LC	25	3/4 13/16 7/8 15/16 1	12 13 14 15 16	1.16 29.5	0.94 23.8	0.66 16.8	0.47 11.9	1.10 27.9	0.50 12.7	1.63 41.4	.4
NAIUD7-xB-LC PAIUD7-xBC-LC QFIUD7-xB-LC	30	1 1-1/16 1-1/8 1-3/16 1-1/4	16 17 18 19 20	1.30 32.9	0.99 25.1	0.80 20.2	0.52 13.2	1.29 32.7	0.50 12.7	1.82 46.2	.6
NAIUE7-xB-LC PAIUE7-xBC-LC QFIUE7-xB-LC	35	1-3/16 1-1/4 1-5/16 1-3/8 1-7/16	19 20 21 22 23	1.47 37.3	1.00 25.4	0.97 24.6	0.53 13.5	1.47 37.3	0.50 12.7	2.00 50.8	.8
NAIUF7-xB-LC PAIUF7-xBC-LC QFIUF7-xB-LC	40	1-7/16 1-1/2 1-9/16 1-5/8	23 24 25 26	1.51 38.3	1.09 27.8	1.01 25.6	0.59 15.0	1.60 40.6	0.50 12.7	2.13 54.1	1.0
NAIUG7-xB-LC PAIUG7-xBC-LC QFIUG7-xB-LC	45	1-1/2 1-5/8 1-11/16 1-3/4	24 26 27 28	1.69 43.0	1.22 31.0	1.07 27.2	0.59 15.0	1.66 42.2	0.63 15.9	2.32 58.9	1.2
NAIUH7-xB-LC PAIUH7-xBC-LC QFIUH7-xB-LC	50	1-11/16 1-3/4 1-13/16 1-7/8 1-15/16 2	27 28 29 30 31 32	1.69 43.0	1.22 31.0	1.07 27.2	0.60 15.2	1.66 42.2	0.63 15.9	2.32 58.9	1.3
NAIUI7-xB-LC PAIUI7-xBC-LC QFIUI7-xB-LC	55	1-15/16 2 2-1/16 2-1/8 2-3/16 2-1/4	31 32 33 34 35 36	1.85 47.0	1.25 31.8	1.22 31.1	0.62 15.8	1.85 47.0	0.63 15.9	2.50 63.6	1.8
NAIUJ7-xB-LC PAIUJ7-xBC-LC QFIUJ7-xB-LC	60	2-3/16 2-1/4 2-5/16 2-3/8 2-7/16	35 36 37 38 39	2.06 52.4	1.28 32.5	1.44 36.5	0.66 16.8	1.44 36.5	0.63 15.9	2.75 69.9	2.0
NAIUK7-xB-LC PAIUK7-xBC-LC QFIUK7-xB-LC	70	2-7/16 2-1/2 2-5/8 2-11/16 2-3/4	38 40 42 43 44	2.10 53.3	1.50 38.1	1.35 34.3	0.75 19.0	2.10 53.3	0.75 19.1	2.88 73.2	4.0
NAIUL7-xB-LC PAIUL7-xBC-LC QFIUL7-xB-LC	75	2-11/16 2-3/4 2-13/16 2-7/8 2-15/16 3	43 44 45 46 47 48	2.04 51.8	1.56 39.7	1.29 32.7	.81 20.5	2.10 53.3	0.75 19.1	2.88 73.2	3.4
NAIUM7-xB-LC PAIUM7-xBC-LC QFIUM7-xB-LC	80	2-15/16 3 3-1/8 3-3/16	47 48 50 51	2.26 57.4	1.59 40.4	1.51 38.4	.84 21.3	2.35 59.7	0.75 19.1	3.13 79.5	4.2

Profile of a Freezer Poly-Round® in a housing



View A (standard)

View B