

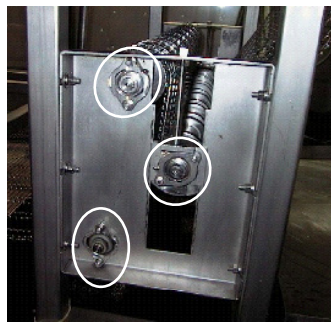


# FRYER BEARINGS: PILOTED 2-BOLT STAINLESS SOLUTION®

## EDT Solution® bearings are sanitary and non-corrosive

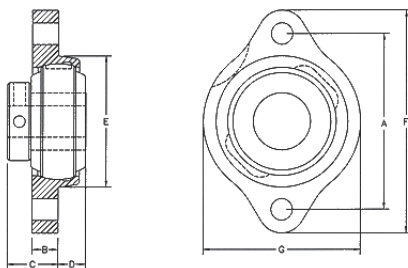
- Can be used on Stein fryers and filter belts:  
Models HPF II, M, TFF II
- Interchange with Linkbelt: FXR-UG212, FXR-U212, FXR-W212U, FXR-YG212
- Designed for HACCP
- Flat mounting surfaces
- Smoothest surface finish in industry
- Sanitary and easy to clean

### For non-drive locations (12 bearings per machine)



### Stainless Poly-Round® Solution®

- “FA” material plane bearing eliminates rolling element maintenance
- Totally greaseless
- Zero-maintenance
- Fully sanitary
- Rated to 500°F
- All non-corrosive components
- No catastrophic failure



See savings in  
“Cost of  
Ownership”  
(over)

PART #	Group	Ring	A	B	C	D	E	F	G	Bolt Size	Wt lbs
			in mm	in mm	in mm	in mm	in mm	in mm	in mm		
<b>FA6AB-SP7-3/4</b>			2-13/16 71.4	13/32 10.3	27/32 21.4	27/64 10.7	2-7/64 53.6	3-9/16 90.5	2-1/2 63.5	5/16	0.8
B	204										
1.850	47										

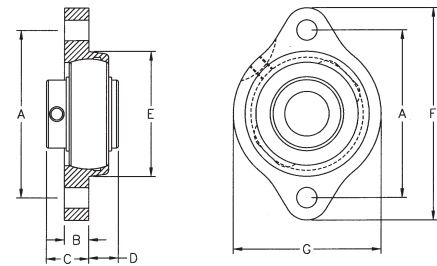
TIP: Specify 3/4H (hardened locking sleeve) with tempura-type batter.

### For drive locations



### Stainless Ball Solution®

- 100% Stainless
- Regreaseable insert rated to 250°F
- Solid lubricated insert rated to 450°F
- Solid lubricated insert is maintenance-free after initial installation



PART #	Group	Ring	A	B	C	D	E	F	G	Bolt Size	Wt lbs
			in mm	in mm	in mm	in mm	in mm	in mm	in mm		
<b>Z_6AB-SP8-3/4</b>			2-13/16 71.4	27/64 10.7	23/32 18.3	1/2 12.7	2-1/8 54.0	3-9/16 90.5	2-7/32 56.4	5/16	0.8
B	204										
1.850	47										

\*Z\_ = Y for regreaseable unit (prefix ZY) -or-  
M for solid lubricated unit (prefix ZM)




# COMPARE THE COSTS OF OWNERSHIP OF PILOTED FRYER BEARINGS

## EDT fryer bearings save money, time, and labor!

Cost of standard piloted bearing over 1 year	
Based on 3 months average life	
Cost to purchase original bearing	\$ 75.00
Cost to install original bearing \$22/hr labor (37¢ per min) x 30 min	\$ 11.00
Cost to lube bearing in weeks when bearing is not changed:	
Labor (37¢ per min) x 15 min/wk at 52 - 4 weeks	\$ 5.50 x 48
\$1/oz x 4 oz/month x 12 mths (Lubriplate High Temp grease)	+ 48.00 \$312.00
Cost to change out original bearing	
Bearing	\$ 75.00
Labor: 37¢ per min x 30 min x 3 times per year	+ 11.00 x 3
	\$ 258.00


<b>Year 1</b>	
Cost of each bearing	<b>\$656.00</b>

Cost of EDT fryer bearing over 1 year	
Based on ss housing lasting 24 months and bearing and sleeve lasting 12 months ( housings MAY last longer)	
	
Cost to purchase EDT bearing <b>FA6AB-SP7-3/4</b>	\$231.00
Cost to install EDT bearing \$22/hr labor (37¢ per min) x 30 min	\$ 11.00
Cost to lubricate EDT bearing No lubricant needed	0
Cost to change out original bearing No replacement for 12 months	0

<b>Year 1</b>	
Cost of each bearing	<b>\$242.00</b>

Original bearing cost	\$ 656.00	per bearing over 1 year
versus EDT bearing cost	<u>\$ 242.00</u>	per bearing over 1 year
<b>FIRST-YEAR SAVINGS</b>	<b>\$ 414.00</b>	x 12 bearings per machine = <b>\$4,968.00 savings</b>

<b>Year 2</b>	
Same as year 1: Bearing (\$75x4), installation (\$11x4), labor (\$5.50x48), lube (\$48)	<b>\$656.00</b>

<b>Year 2</b>	
Cost of insert and sleeve (p/n FAIUB7-SP-3/4, \$149), labor (37¢ per min x 30 min, \$11)	 <b>\$160.00</b>

Original bearing cost	\$1312.00	per bearing over 2 years
versus EDT bearing cost	<u>\$ 402.00</u>	per bearing over 2 years
<b>2-YEAR SAVINGS</b>	<b>\$ 910.00</b>	x 12 bearings per machine = <b>\$10,920.00 savings</b>

The above illustration is based on average plant conditions.  
Individual results can vary based on breeding recipe, installation and maintenance practices, and environmental conditions.