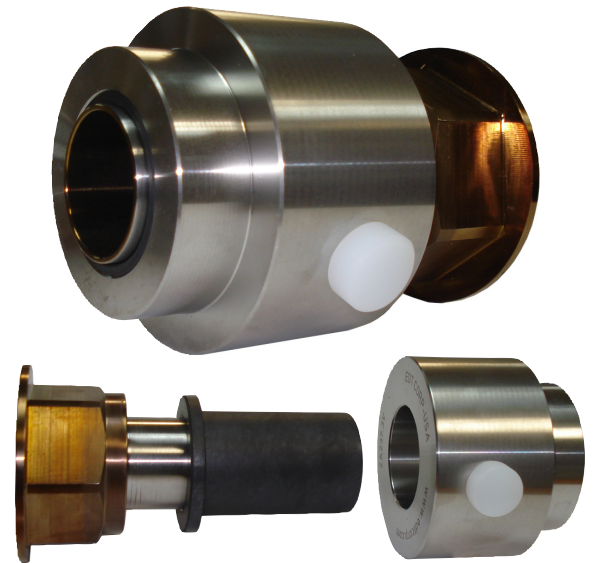
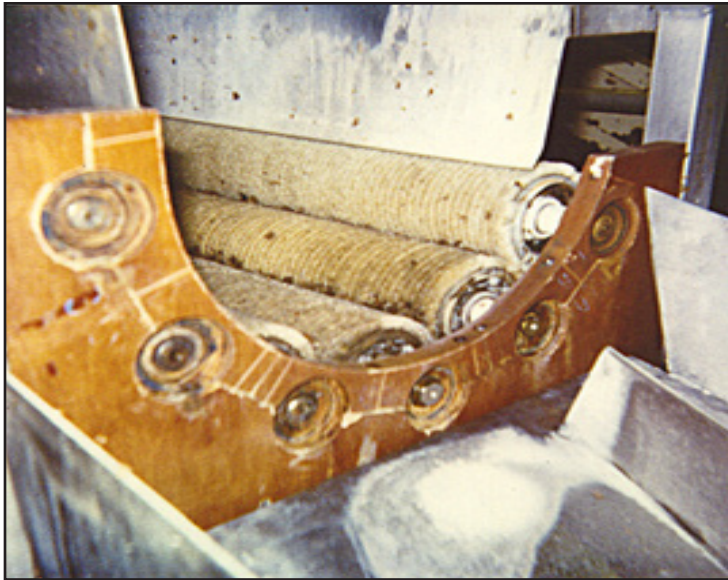




# PEELER BEARINGS SCRUBBER BEARINGS

For peelers by VanMark, Hawkeye, Lyco



## EDT peeler bearings are designed to perform for a full season with no maintenance

- Plane bearings of high performance polymer and stainless steel eliminate corrosion and product contamination
- Greaseless operation
- Unaffected by water, starch, or peels
- Designed for discharge end of chamber
- Processing fluid on the output/wet end keeps the polymer bearing material cool
- Replace polymer bearing when brushes are changed; other parts re-usable

Maximum recommended  
RPM is 350.  
(Bearing must run wet)

|                      | Original Bearing  | EDT Peeler Bearing  |
|----------------------|---|---|
| Bearing              | 1-3/16" steel cartridge unit  | EDT SGH is a 4-piece bearing assembly of hardened stainless shaft sleeve, QF flanged polymer bearing, stainless cartridge, and anti-rotation pin  |
| Length of Service    | 1-4 months  | 8 to 18 months  |
| Failure              | <ul style="list-style-type: none"> <li>▪ Potato starch rusts roller bearings</li> <li>▪ Water washdown flushes grease out of bearing</li> </ul> | <ul style="list-style-type: none"> <li>▪ 'QF' material withstands water, starch, abrasives</li> <li>▪ General and predictable wear</li> <li>▪ Reduced chance of catastrophic failures</li> <li>▪ Bore elongates over time</li> <li>▪ Install only on WET END – bearings must run wet</li> </ul> |
| Maintenance Required | Frequent greasing and replacement due to water, starch, and potato peels  | <ul style="list-style-type: none"> <li>▪ No grease or other maintenance with proper installation</li> <li>▪ Change polymer bearing when brushes are changed</li> <li>▪ Re-use cartridge</li> <li>▪ Change sleeve when worn, or seasonally</li> </ul>  |
| Features & Benefits  | Original equipment component  | <ul style="list-style-type: none"> <li>▪ Zero maintenance</li> <li>▪ No grease</li> <li>▪ Less downtime</li> <li>▪ Further reduce maintenance costs by re-using some components - see Cost of Ownership illustration (over)</li> </ul>  |



COMPARE THE COSTS OF OWNERSHIP OF  
**POTATO PEELER BEARINGS**  
 ON VANMARK PEELER / SCRUBBER / WASHER

**Cost of original peeler bearing**  
 over 1 year

Based on bearing  
 lasting 3 months



Cost to purchase original bearing  
 Original bearing: 1-3/16 bore cartridge \$190.00

Cost to install original bearing  
 Labor (1 hour at \$30/hr) \$ 30.00

Cost to lubricate original bearing  
 55¢/oz x 1 oz per day (i.e. Lubriplate® LFG) \$ 0.55  
 Labor (50¢ per min) x 1 min + 0.50  
 x 260 (daily, 5 days/week x 52 weeks) x 260  
 \$273.00

Cost to replace original bearing  
 Cost of bearing \$190.00  
 Labor (1 hour at \$30/hr) \$ 30.00  
 x 3 (replace bearing every 3 months) x 3  
 \$660.00

**Year 1**  
 4 total change-outs **\$1,153.00**

**Cost of EDT peeler bearing**  
 over 1 year

Based on:

- Sleeve lasting 2+ years
- Bearing lasting 6 months
- Cartridge lasting 2 years



Cost to purchase EDT SGH  
**ZAH248H** Sleeve \$305.00  
**QF247F** Bearing insert 194.00  
**ZA237.3A** Cartridge with polymer pin +151.00  
 \$650.00

Cost to install EDT bearing  
 Labor (1 hour at \$30/hr) \$ 30.00

Cost to lubricate EDT bearing  
 No lubricant needed 0

Cost to change out EDT components  
 Replace insert only: **QF247F** \$194.00  
 Labor (1 hour at \$30/hr) + 30.00  
 (every 6 months) \$224.00

**Year 1**  
 Cost of each bearing **\$904.00**

Original bearing cost \$ 1,153.00 per bearing over 1 year  
 versus EDT bearing cost \$ 904.00 per bearing over 1 year  
**FIRST-YEAR SAVINGS \$ 249.00 x 8 bearings per machine = \$1,992.00 savings**

**Year 2**  
 Same costs as year 1: Bearing cartridge (\$190x4), labor (\$30x4), lubrication (\$273) **\$1,153.00**  
**Year 2**  
 Cost of insert (p/n QF247F \$194x2), labor (\$30x2) Note: Re-use cartridge & sleeve **\$448.00**

Original bearing cost \$ 2,306.00 per bearing over 2 years (\$1153 + \$1153 = \$2306)  
 versus EDT bearing cost \$ 1,352.00 per bearing over 2 years (\$904 + \$448 = \$1352)  
**2-YEAR SAVINGS \$ 954.00 x 8 bearings per machine = \$7,632.00 savings**

Plus significantly reduced maintenance scheduling and downtime!

**Peeler Bearings**



|                | Equipment | Polymer Bearing | Sleeve    | Cartridge | Pin        |
|----------------|-----------|-----------------|-----------|-----------|------------|
| <b>EDT SGH</b> | Vanmark   | QF247F          | ZAH248H   | ZA237.3A  | Peeler Pin |
| <b>EDT SGR</b> | Vanmark   | QF247F          | ZAH248G   | ZA237.3A  | Peeler Pin |
| <b>EDT SAH</b> | Vanmark   | QF247F          | ZAH248H   | ZA237.3S  | SSpeel Pin |
| <b>EDT SAR</b> | Vanmark   | QF247F          | ZAH248G   | ZA237.3S  | SSpeel Pin |
| <b>EDT SLB</b> | Lyco      | QF247F          | ZAH130-LK | ZA237.3A  | Peeler Pin |