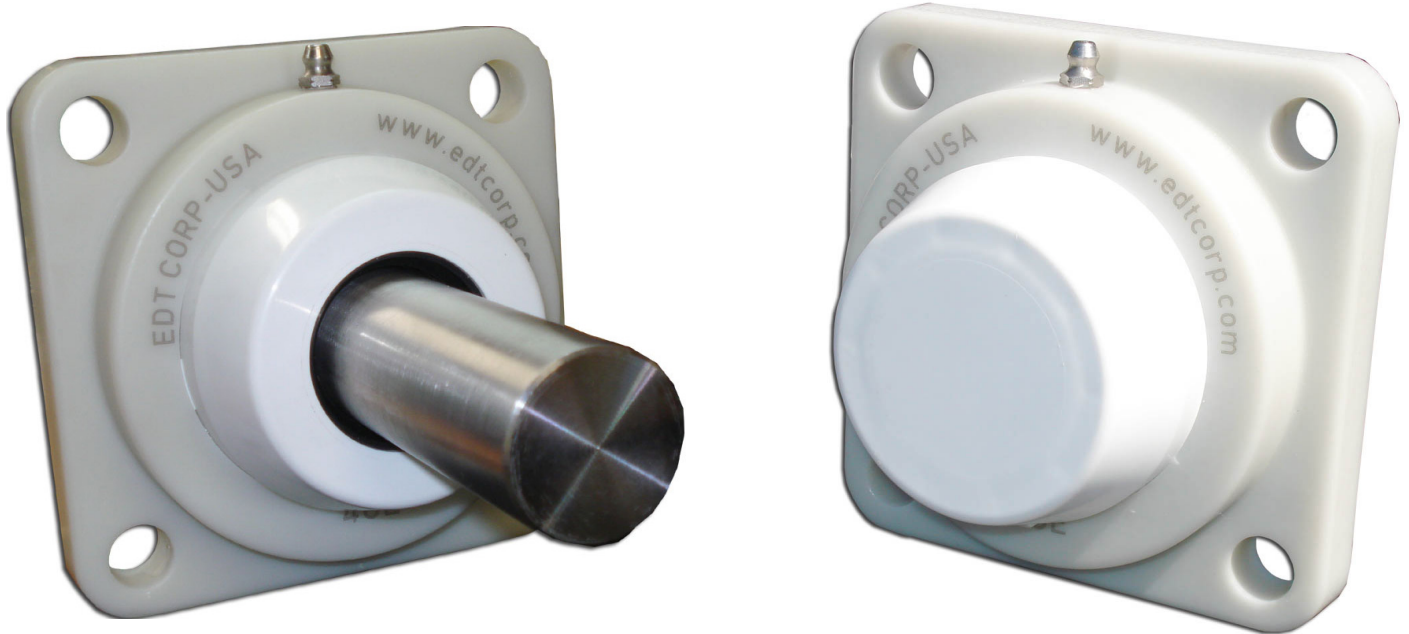




SOLUTION[®] HOUSINGS WITH SAFETY CAPS



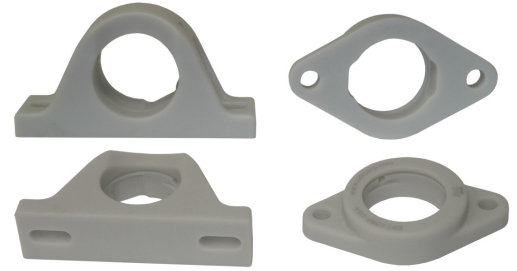
Cast polymer bearing housings with blind- or thru-bore safety caps




- Smooth lines minimize places that are difficult to clean
- No additional hardware necessary
- Available in all bearing styles
- Available for insert sizes 47mm (204 ring) to 90 mm (210 ring) sizes
- Housings accept EDT and other industry-standard bearing inserts

EDT SOLUTION® POLYMER HOUSINGS & CAPS

FEATURES AND BENEFITS:

- Housings are sanitary, easy to clean, won't chip or peel.
- Housing mounting surfaces smooth and flat.
- Gray color complements stainless equipment.
- Housing available in all styles and sizes; blind caps and thru caps available for most popular sizes.
- Housing can be reusable many times. New caps can be purchased separately.
- Cap fits over most kinds of insert bearings, including:



Ball Bearing	3-Piece ALL-ROUND® Bearing	Poly-Round® Bearing
		
EDT stainless, or any brand; regreaseable or solid lubricated	No grease in EDT plane bearings results in cleanest bearing operation over time.	

PART NUMBERING OF EDT SOLUTION® HOUSING INCLUDING A SAFETY CAP						
Bearing Identifier	Housing Shape	Housing Style (material)	EDT Group size correlates to insert OD	Shape modifier & cap identifier	Assembly modifier	– Shaft size
ZY NA QB QF ZJ ZW etc...	1 or 10 = PB 2 = 2-Bolt 3 = 3-Bolt flange 4 = 4-Bolt flange 6 = Small 2-bolt 8 = Hangar 9 = Tapped base	G = Polymer	B = 204 ring/47 mm C = 205 ring/52 mm D = 206 ring/62 mm E = 207 ring/72 mm F = 208 ring/80 mm H = 210 ring/90 mm	- CB = Cap blind - TB = Cap thru	8 – ball bearing assembly 9 or 7 or 4 – Poly-Round® with sleeve assembly 5 or 3 – Poly-Round® without sleeve assembly	– Inch or metric
Example: ZY4GC-CB8-1 or NA4GE-CB7-1-1/4 (shown in cover photo, right side) ZY4GC-TB8-25 or NA4GE-TB7-1-3/8 (shown in cover photo, left side)						

For polymer housings See section B (Amber)
 For All-Round® Bearings See section D (Red)
 For Poly-Round® Bearings See section B (Amber)
 For stainless ball bearings See section F (Light Gray)